



Monitoring, Management Software and Intelligent Technology Integrations

Generating Confidence

maxlogic & mavigard
fire and gas detection systems



Mavili Elektronik A.S operating in the field of fire and gas detection systems since 1987, offers its products and services internationally in compliance with international standards. The company manufactures accredited products approved by authorized institutions, making them available for use in over **70 countries**, including Turkey.

The company, utilizing state-of-the-art technology, produces innovative and user-friendly solutions in the integration of smart building technologies. It is a solution partner for many leading brands in the fields of **CCTV, IP Camera, VMS/PSIM, Access Control and BMS**, establishing itself as a leader in these areas.

Mavili conducts meticulous project planning with **Maxlogic & Mavigard** brand fire alarm systems for various types of areas, ranging from shopping malls to airports, cargo ships to passenger vessels, large hotel chains to complex living spaces, hospitals, universities, and high-risk structures such as industrial facilities.

mavili

The company, demonstrating its expertise in both developing products and implementing them in the field concerning standards and regulations, offers a diverse range of products. This range includes software solutions that provide centralized monitoring and control, emphasizing the company's commitment to compliance with standards and regulations throughout the product development and implementation processes.

Mavili combines the expertise of its specialized workforce, industry experience, and a commitment to developing products tailored to customer needs while developing fire and gas detection systems, which are crucial for ensuring life and property safety. The company places great importance on merging knowledge, sector know-how, and understanding customer requirements to create effective solutions for fire and gas safety.

Mavili, its factories located in Ümraniye and Gebze, along with seven regional directorates, aims to be by the customer's side not only during the pre-sales phase but also after the sale. With a workforce exceeding **250 people**, the company continues to serve this industry by maintaining a presence in various regions.

Certificates and Licences

- * Mavili Elektronik A.Ş.'s **ISO 9001** quality management system, which it implements, has been audited by the world-renowned **LPCB (Loss Prevention Certification Board)** organization and is certified for compliance with **ISO 9001:2015**.
- * We have undergone an audit for compliance with the **TS EN ISO/IEC 27001:2017** Information Security Management System, conducted by the certification and surveillance services of DataCert Certification Ltd. The audit has confirmed our compliance, and we have been certified with the **TS EN ISO/IEC 27001:2017** certificate.
- * Our Fire Alarm System products have the **TS EN 54** certification.
- * Our Fire Detection and Alarm System products have been certified by **LPCB** and **Dedal**, receiving **EN 54** and **CPR** certifications. This approval from international accredited organizations further validates the quality of our products.
- * Our services are certified with the **TS 12849** Service Place Competency Certificate and the After Sales Services Competency Certificate.
- * Our Marine type products are certified by **TÜRK LOYDU (SOLAS 74 and FSS)**, and **MED (WHEELMARK)**.
- * The factory located in Gebze has been entitled to the **Zero Waste Certificate** by establishing a Zero Waste Management System in compliance with the Zero Waste Regulation, which came into effect with the publication in the Official Gazette dated 12/07/2019 and numbered 30829.
- * Our products have Customs Union Conformity Certificates (**EAC Certificates**) confirming their compliance with approved regulations within the Eurasian Economic Union region.
- * Certification by **Exveritas** has been obtained, verifying the implementation of quality management systems in the production of explosion-proof products with the **EN ISO/IEC 80079-34** certificate. Additionally, products intended for use in explosive atmospheres have been certified with the **ATEX Type Approval Certificate** for intrinsic safety.
- * Our products have **USAGE LICENSES** issued by the authorized entities in many countries worldwide.

Project Areas

More than **100.000** buildings worldwide are protected by **Maxlogic & Mavigard** fire and gas detection systems.



Shopping Malls



Public Buildings



Residences



Car Parks



Industrial Facilities



Airports



Metro and Railway



Hotels



Court House and Prisons



Hospitals



Educational Institutions

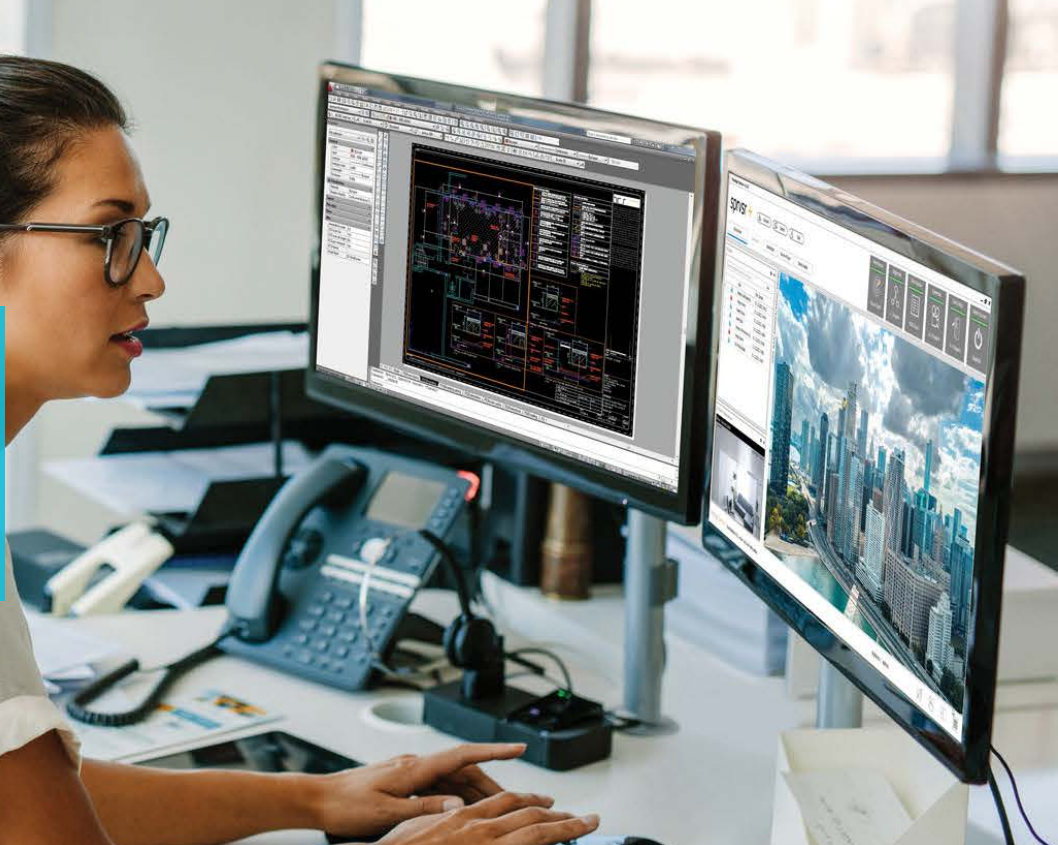


Sea Vehicles

and you may contact us for further information



Key of Remote Control...



SPRVSR+ Graphical Monitoring and Management Software

SPRVSR+; Maxlogic is a user-friendly software developed for graphical remote monitoring and management of addressable systems and other systems. It provides various methods for analysis with event filters by keeping records of all events (fires, faults, user interventions, etc.) related to the fire alarm system. **SPRVSR+** software is software integrated with framework software and Building Management Systems (BMS).

- ▶ With the "Easy Display" screen in the **SPRVSR+** program, control operations such as ease of follow-up, creating reminders, database backup and restore can be performed
- ▶ Ability to Zoom in/out on map and manual control of the devices from Map
- ▶ 1000 networks can be monitored, each consisting of 64 Control Panels.
- ▶ In case of fire and fault; Remote computers via LAN, WAN or internet, where the IP address is defined, automatically or a manual warning message can be sent
- ▶ Detector contamination control can be activated/deactivated. Measurement periods can be determined for the contamination monitoring of the detectors
- ▶ By using the simulation option, it is possible to control the maps, devices and system operation with an unreal fire event
- ▶ At the time of the event; the type of event, date, time, etc. Instant or daily reporting containing information can be sent via SMS or e-mail
- ▶ Provides options for viewing, saving, and printing an event record

Ability to Zoom In/Out on Map

Multi Monitoring and Management

Contamination Control

BMS(Building Management Systems) Integration

VMS (Video Management Systems) Integration

Access Control Integration

IP Camera Integration

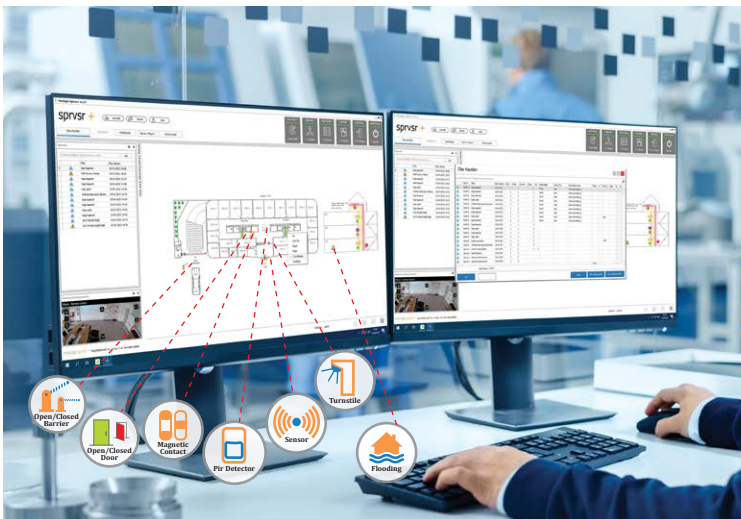
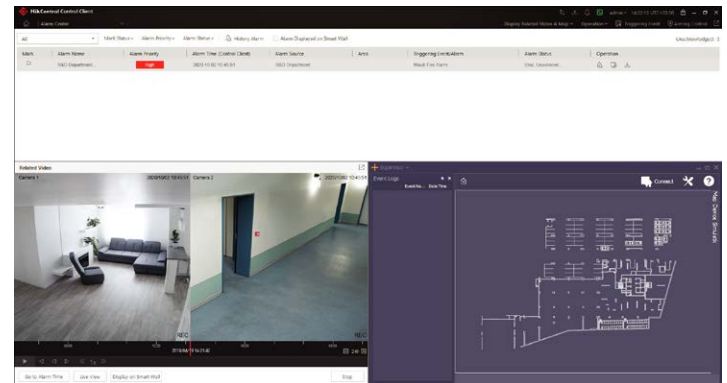
Simulation Option for System Control

SMS/E-mail Notification



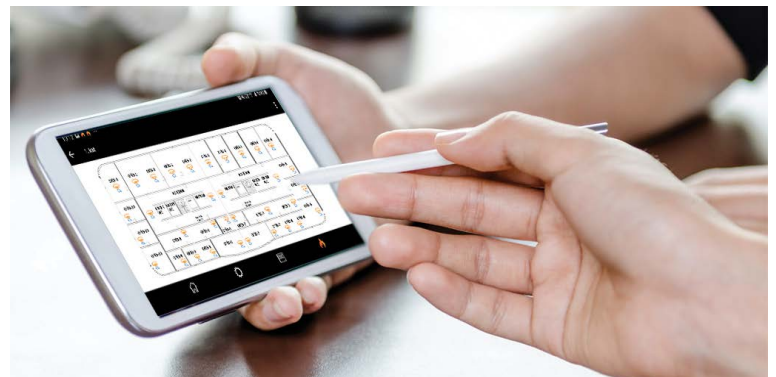
The development of technology has facilitated the construction of large and complex structures, and it has led to the need to manage different mechanical and electronic systems such as elevators, security cameras, card passes in these buildings from a single center. Open platforms that offer solutions to this need have increased their importance with the technology partnership of expert companies.

Maxivi's **BMS** (Building Management System), **VMS** (Video Management System) etc. Integration with smart technology product framework software is preferred to prevent increasing security risks in such places. There are world-renowned solution partners that provide ease of monitoring/management and time savings to the user by bringing together the multi-management of the systems on a single platform. Maxlogic **SPRVS+** Graphical Monitoring and Management Software integrates with “Plug-In” level framework software, providing a progressive and safe solution for fire protection of spaces.



The **SPRVSr+** software has integration capability with Access Control **(Card Access)** systems. By accessing card access devices on a map, commands such as door opening and closing can be easily issued, and live connections can be established to cameras matching the device. When the system is active, if an authorized or unauthorized card is read on the card readers on the doors, interactions can be viewed on the map, and details can be learned from event logs.

With **Android / IOS software**, the user does not need to be at the computer to control and monitor the fire alarm system.



SPRVSR+ Master - Slave Functioning

SPRVSR+ Master - Slave Functioning

- Maxlogic SPRVSR+ Graphical Monitoring and Management Software allows for point-based remote monitoring, control, and storage of event data for Maxlogic-addressable panels, and panel-based operations for panels from other brands.
- While operations such as communication, monitoring and control with all GCU connections can be done on the computer with the Master Sprvrs+ software.
- Monitoring and some restricted control operations can be done on the computer with the Slave Sprvrs+ software installed
- In situations requiring intervention, **Silence Alarm, Alarm etc.** commands can also be sent via **SPRVSR+**.

Overall Status: It shows the events of fire, fault etc. in the fire alarm system in detail.

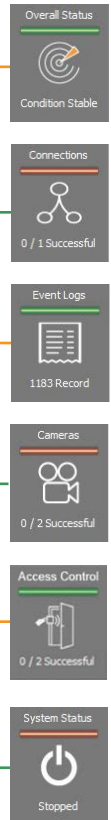
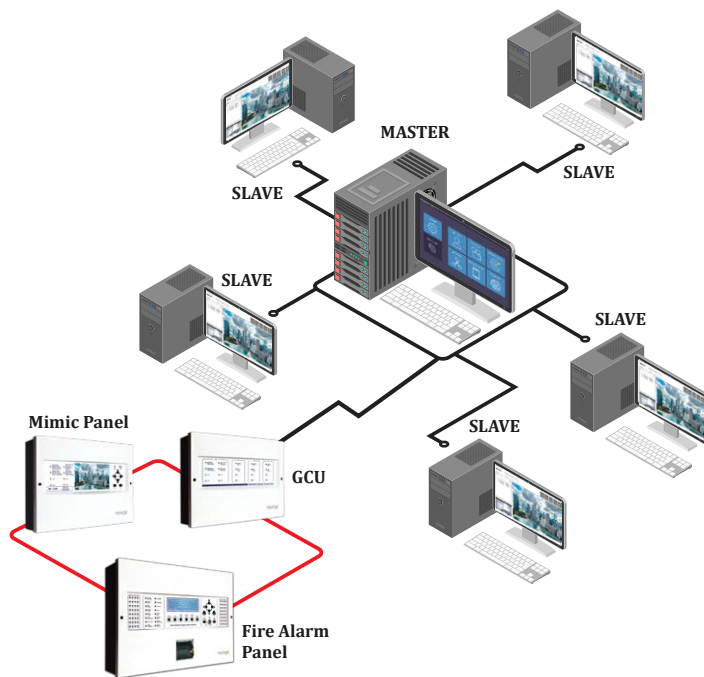
Connections: It shows the connection status of the modules connected to the panel.

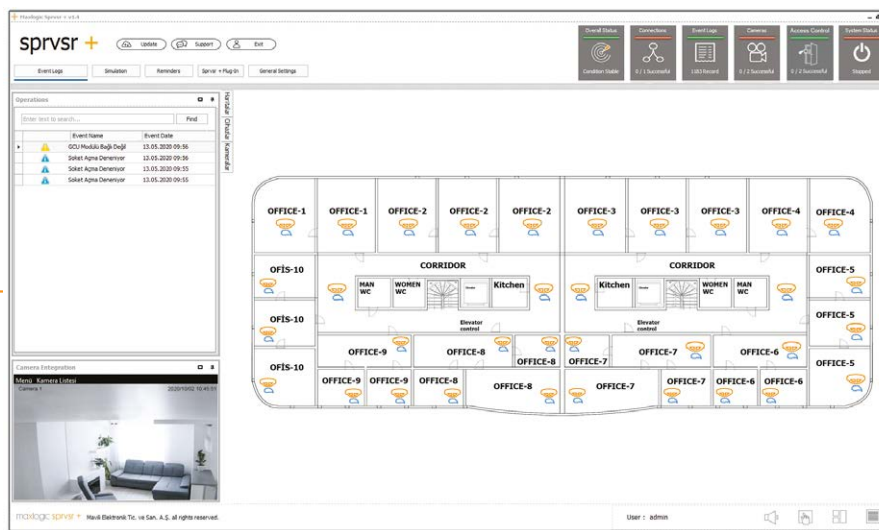
Event Logs: It shows the events of fire, fault etc. in the fire alarm system.

Cameras: It shows the connection status of the cameras connected with the devices in the fire alarm system.

Access Control: Commands such as door opening and closing can be given easily, and live connection can be made to cameras paired with the device.

System Status: It shows the monitoring status of the fire alarm system has started or not.





- By adding maps with the placement of devices into **Maxlogic SPRVSR+** software, it is possible to visually monitor the location during events. **The zoom feature** allows for detailed examination on the map. The point of detection can be pinpointed to the specific device.
- Contamination control** periods can be determined for the detectors.
- In the event of a fire, the location of fire can be monitored via the **IP camera** system
- At the time of the event; **SMS** or **E-mail** can be sent with instant or daily reporting including the type, date, time, etc. of the event.

SPRVSR+ MODELS

Product Code	Description
ML-1633.1.01	Maxlogic SPRVSR+ Master Graphic Monitoring and Managing Software for Single Panel
ML-1633.1.02	Maxlogic SPRVSR+ Master Graphic Monitoring and Managing Software using cost for 2 panels
ML-1633.1.04	Maxlogic SPRVSR+ Master Graphic Monitoring and Managing Software using cost for 4 panels
ML-1633.1.08	Maxlogic SPRVSR+ Master Graphic Monitoring and Managing Software using cost for 8 panels
ML-1633.1.16	Maxlogic SPRVSR+ Master Graphic Monitoring and Managing Software using cost for 16 panels
ML-1633.1.32	Maxlogic SPRVSR+ Master Graphic Monitoring and Managing Software using cost for 32 panels
ML-1633.1.64	Maxlogic SPRVSR+ Master Graphic Monitoring and Managing Software using cost for 64 panels
ML-1633.1.128	Maxlogic SPRVSR+ Master Graphic Monitoring and Managing Software using cost for 128 panels
ML-1633.1.256	Maxlogic SPRVSR+ Master Graphic Monitoring and Managing Software using cost for 256 panels
ML-1633.1.512	Maxlogic SPRVSR+ Master Graphic Monitoring and Managing Software using cost for 512 panels
ML-1633.1.1024	Maxlogic SPRVSR+ Master Graphic Monitoring and Managing Software using cost for 1024 panels
ML-1633.1.2048	Maxlogic SPRVSR+ Master Graphic Monitoring and Managing Software using cost for 2048 panels
ML-1633.1.4096	Maxlogic SPRVSR+ Master Graphic Monitoring and Managing Software using cost for 4096 panels
ML-1633.1.8192	Maxlogic SPRVSR+ Master Graphic Monitoring and Managing Software using cost for 8192 panels
ML-1633.2.01	Maxlogic SPRVSR+ Slave Graphic Monitoring and Managing Software using cost for single panel
ML-1633.2.02	Maxlogic SPRVSR+ Slave Graphic Monitoring and Managing Software using cost for 2 panels
ML-1633.2.04	Maxlogic SPRVSR+ Slave Graphic Monitoring and Managing Software using cost for 4 panels
ML-1633.2.08	Maxlogic SPRVSR+ Slave Graphic Monitoring and Managing Software using cost for 8 panels
ML-1633.2.16	Maxlogic SPRVSR+ Slave Graphic Monitoring and Managing Software using cost for 16 panels
ML-1633.2.32	Maxlogic SPRVSR+ Slave Graphic Monitoring and Managing Software using cost for 32 panels
ML-1633.2.64	Maxlogic SPRVSR+ Slave Graphic Monitoring and Managing Software using cost for 64 panels

SPRVSR+ MODELS

Product Code	Description
ML-1633.2.128	Maxlogic SPRVSR+ Slave Graphic Monitoring and Managing Software using cost for 128 panels
ML-1633.2.256	Maxlogic SPRVSR+ Slave Graphic Monitoring and Managing Software using cost for 256 panels
ML-1633.2.512	Maxlogic SPRVSR+ Slave Graphic Monitoring and Managing Software using cost for 512 panels
ML-1633.2.1024	Maxlogic SPRVSR+ Slave Graphic Monitoring and Managing Software using cost for 1024 panels
ML-1633.2.2048	Maxlogic SPRVSR+ Slave Graphic Monitoring and Managing Software using cost for 2048 panels
ML-1633.2.4096	Maxlogic SPRVSR+ Slave Graphic Monitoring and Managing Software using cost for 4096 panels
ML-1633.2.8192	Maxlogic SPRVSR+ Slave Graphic Monitoring and Managing Software using cost for 8192 panels
ML-1636.1	Maxlogic SPRVSR+ Plug-In Graphical Monitoring Software Using cost, HikCentral Integration
ML-1636.2	Maxlogic SPRVSR+ Plug-In Graphical Monitoring Software Using cost, VideoXpert Integration
ML-1636.3	Maxlogic SPRVSR+ Plug-In Graphical Monitoring Software Using cost, XProtect Integration
ML-1636.4	Maxlogic SPRVSR+ Plug-In Graphical Monitoring Software Using cost, Nx Witness Integration
ML-1636.5	Maxlogic SPRVSR+ Plug-In Graphical Monitoring Software Using cost, Seetec Qoqniy Integration
ML-1636.6	Maxlogic SPRVSR+ Plug-In Graphical Monitoring Software Using cost, Mirsad Integration
ML-1636.7	Maxlogic SPRVSR+ Plug-In Graphical Monitoring Software Using cost, Wisenet Wave Integration
ML-1636.8	Maxlogic SPRVSR+ Plug-In Graphical Monitoring Software Using cost, Cayuga Integration
ML-1636.9	Maxlogic SPRVSR+ Plug-In Graphical Monitoring Software Using cost, ISIM Integration
ML-1636.10	Maxlogic SPRVSR+ Plug-In Graphical Monitoring Software Using cost, Axxon Next Integration
ML-1636.11	Maxlogic SPRVSR+ Plug-In Graphical Monitoring Software Using cost, Avigilon Control Center Integration
ML-1636.12	Maxlogic SPRVSR+ Plug-In Graphical Monitoring Software Using cost, Cathexis Integration
ML-1636.13	Maxlogic SPRVSR+ Plug-In Graphical Monitoring Software Using cost, Rosslare Integration
ML-1636.14	Maxlogic SPRVSR+ Plug-In Graphical Monitoring Software Using cost, Vanderbilt Integration
ML-1636.15	Maxlogic SPRVSR+ Plug-In Graphical Monitoring Software Using cost, Schneider EcoStruxure Integration

IOS MODELS

Product Code	Description
ML-1635.1	Maxlogic SPRVSR+ Graphical Monitoring and Control IOS Software using cost, 1 user
ML-1635.5	Maxlogic SPRVSR+ Graphical Monitoring and Control IOS Software using cost, 5 user
ML-1635.10	Maxlogic SPRVSR+ Graphical Monitoring and Control IOS Software using cost, 10 user

ANDROID MODELS

Product Code	Description
ML-1634.1	Maxlogic SPRVSR+ Graphical Monitoring and Control Android Software using cost, 1 user
ML-1634.5	Maxlogic SPRVSR+ Graphical Monitoring and Control Android Software using cost, 5 user
ML-1634.10	Maxlogic SPRVSR+ Graphical Monitoring and Control Android Software using cost, 10 user

DONGLE MODELS

Product Code	Description
ML-1661.1	Maxlogic SPRVSR+ Master USB Dongle
ML-1661.2	Maxlogic SPRVSR+ Slave USB Dongle
ML-1661.3.1	Maxlogic SPRVSR+ Plug-In USB Dongle using cost, HikCentral Authorization
ML-1661.3.2	Maxlogic SPRVSR+ Plug-In USB Dongle using cost, VideoXpert Authorization
ML-1661.3.3	Maxlogic SPRVSR+ Plug-In USB Dongle using cost, XProtect Authorization
ML-1661.3.4	Maxlogic SPRVSR+ Plug-In USB Dongle using cost, Nx Witness Authorization
ML-1661.3.5	Maxlogic SPRVSR+ Plug-In USB Dongle using cost, Seetec Qoqniy Authorization
ML-1661.3.6	Maxlogic SPRVSR+ Plug-In USB Dongle using cost, Mirsad Authorization
ML-1661.3.7	Maxlogic SPRVSR+ Plug-In USB Dongle using cost, Wisenet Wave Authorization
ML-1661.3.8	Maxlogic SPRVSR+ Plug-In USB Dongle using cost, Cayuga Authorization
ML-1661.3.9	Maxlogic SPRVSR+ Plug-In USB Dongle using cost, ISIM Authorization
ML-1661.3.10	Maxlogic SPRVSR+ Plug-In USB Dongle using cost, Axxon Next Authorization
ML-1661.3.11	Maxlogic SPRVSR+ Plug-In USB Dongle using cost, Avigilon Control Center Authorization
ML-1661.3.12	Maxlogic SPRVSR+ Plug-In USB Dongle using cost, Cathexis Authorization
ML-1661.3.13	Maxlogic SPRVSR+ Plug-In USB Dongle using cost, Rosslare Authorization
ML-1661.3.14	Maxlogic SPRVSR+ Plug-In USB Dongle using cost, Vanderbilt Authorization
ML-1661.3.15	Maxlogic SPRVSR+ Plug-In USB Dongle using cost, Schneider EcoStruxure Authorization

Global Solution Partners

The development of technology has facilitated the construction of large and complex structures and has created the need to manage different mechanical and electronic systems such as elevators, security cameras, card passes in these buildings from a single center. Open platforms that offer solutions to this need have increased their importance with the realization of technology partnerships by companies that are experts in their fields.

Our **CCTV, IP Camera, VMS/PSIM, Access Control**, and **BMS** solutions have become essential software integrations for managing systems in environments facing increasing security risks. We have renowned solution partners globally that bring together the multiple management of systems on a single platform, providing users with significant management ease and time savings. Integrated into roof software, our **Maxlogic SPRVSR+ Graphical Monitoring and Management Software** offers an advanced and secure solution for protecting premises against fire.



aselsan



AVIGILON™



axxi4next



CathexisVision®
Video Surveillance Management Solutions



Hanwha
Techwin



HIKVISION®



milestone



PELCO®



ROSSLARE



Schneider
Electric



Qognify



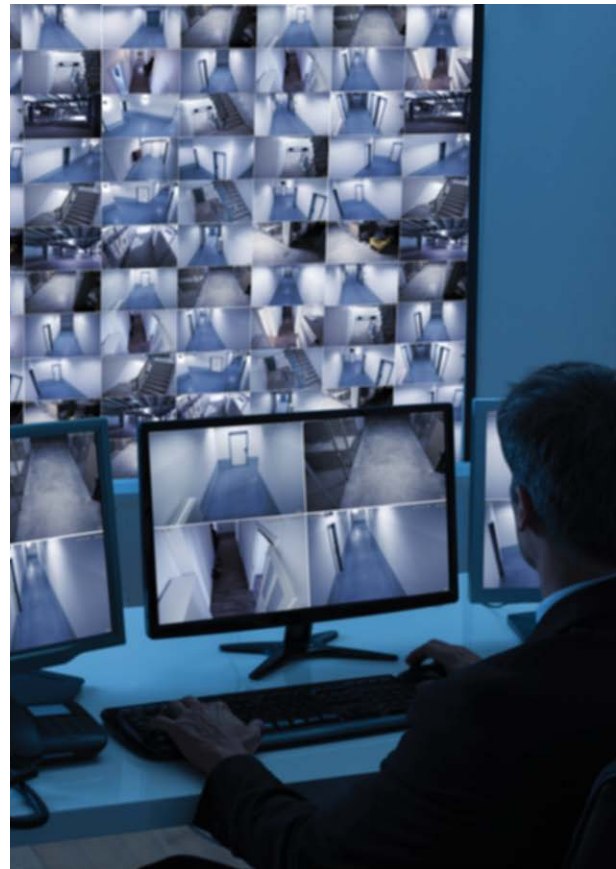
VANDERBILT



More...

Thanks to these Integrations;

- ▶ Maxlogic & Mavigard brand fire detection devices can be displayed graphically on the floor plan.
- ▶ SPRVSR+ Plug-In software sends information to the framework software when a fire alarm is detected and provides live images from the relevant IP cameras.
- ▶ Detailed map and device information of the area can be accessed. It is possible to switch between maps manually as well as automatically
- ▶ As far as the framework software allows, event logs can be kept according to different criteria such as opening and closing the system, users log in and logout, date, time, event status and severity. Location information, device type and device address information can be viewed easily
- ▶ After the fire information is received, the system is intervened in two different ways.
 - 1) The interface of the panel on the map is accessed and intervened through the remote control process.
 - 2) Via Alarm, Silence Alarm, Silence Buzzer, Reset buttons in the Devices menu



Mavili has made a significant difference in ensuring life and property safety against potential fires in facilities utilizing intelligent building technology, through versatile software developed in partnership with solution providers in **CCTV, IP Camera, VMS/PSIM, Access Control**, and **BMS** fields.



Selected Samples from Our References



www.mavili.com.tr/en

Follow us...



.../mavilelektronikglobal